



## A New Surgery for Littlebourne

Dr James Hinksman, Emma Ray, Dee Stenning

**It's taken a while...**



**From The Corn Stores**

**Via this**



**To Court Hill**



## A lovely big Car Park



24 Parking spaces  
including 4 disabled  
spaces reserved for blue  
badge holders

## Spacious Waiting Room



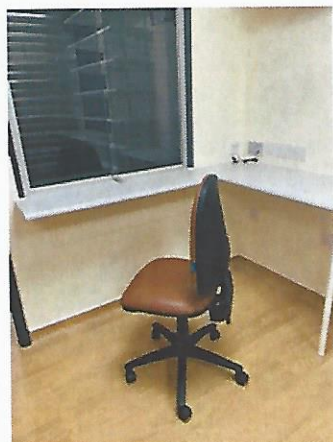
Comfortable easy clean seating in line with infection control and  
CQC regulations

## All on one level

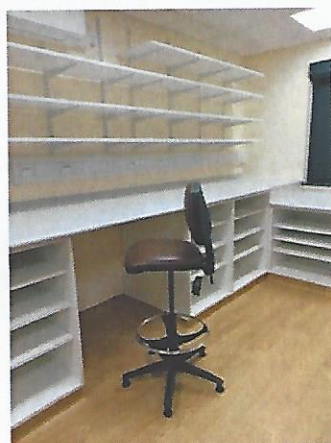


All patient services on the ground floor for improved access

## A lovely large Dispensary



Dispensary reception desk



Dispensary – increased storage space



## When will we all be moving?



The building is complete.....

Hooray!!!

However, there are still a few IT infrastructure tasks to complete for us to work in terms of business as usual.

Therefore, although moving is imminent we are still awaiting a formal date and will share this with you all once this has been agreed with us.

We look forward to our continued good working relationship.



**WE LOOK FORWARD TO  
CELEBRATING THE GRAND  
OPENING WITH YOU ALL...**

